

V0 launch pad skirt Manual

- Can choose where (or not) to mount display. Assembly drawings for each mounting location are identified by colored frames.

Center display 

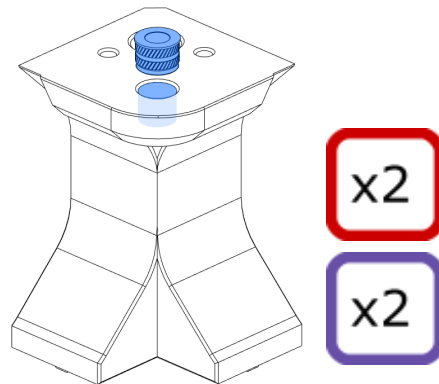
Left display 

Right display 

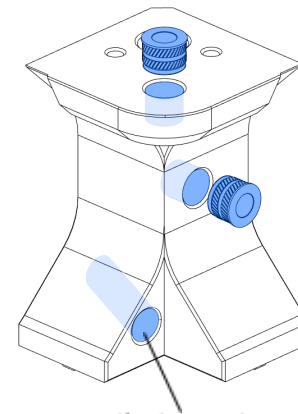
No display 

- Choose a divided skirt (all can be printed in V0) or an undivided skirt, and print the inside of the folder you chose.
- STL is produced in sizes designed for ABS/ASA shrinkage, which can cause problems when printed on PLA.

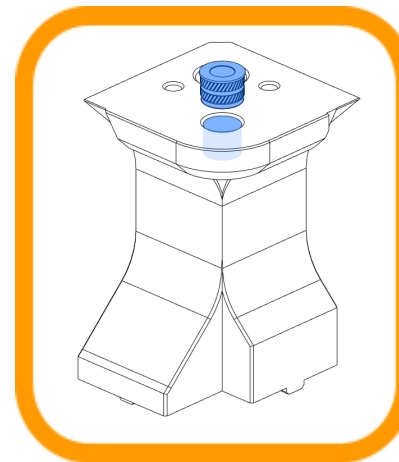
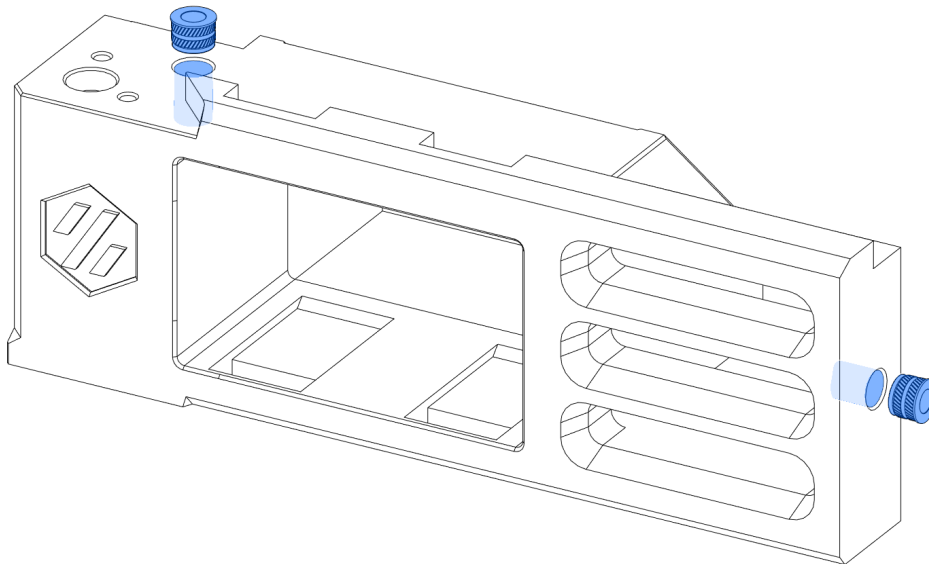
HEAT SET INSERT



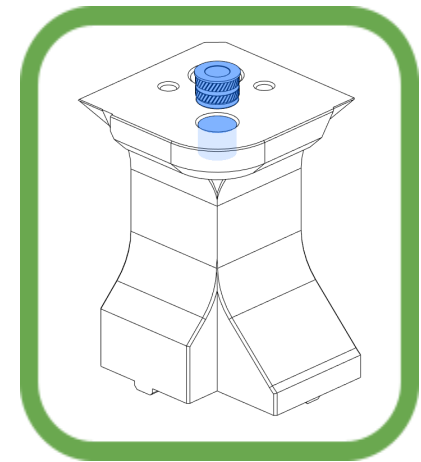
If choose center display or no display, assemble 2 pieces.



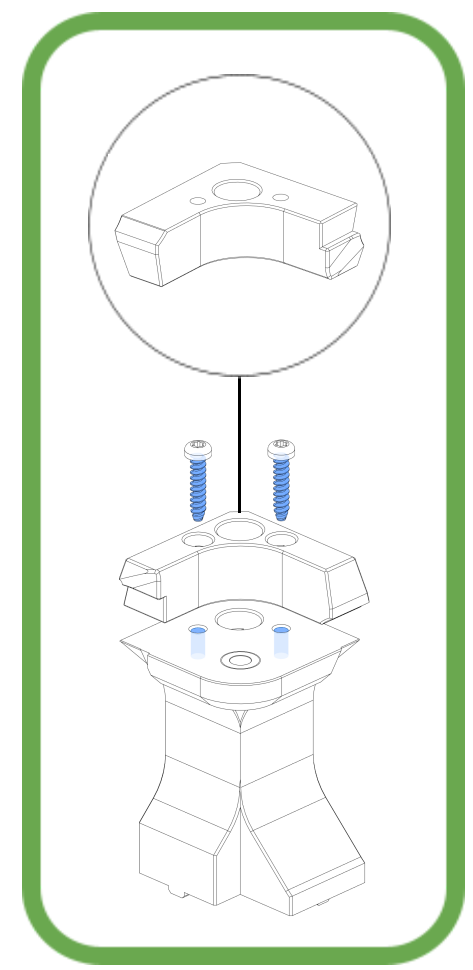
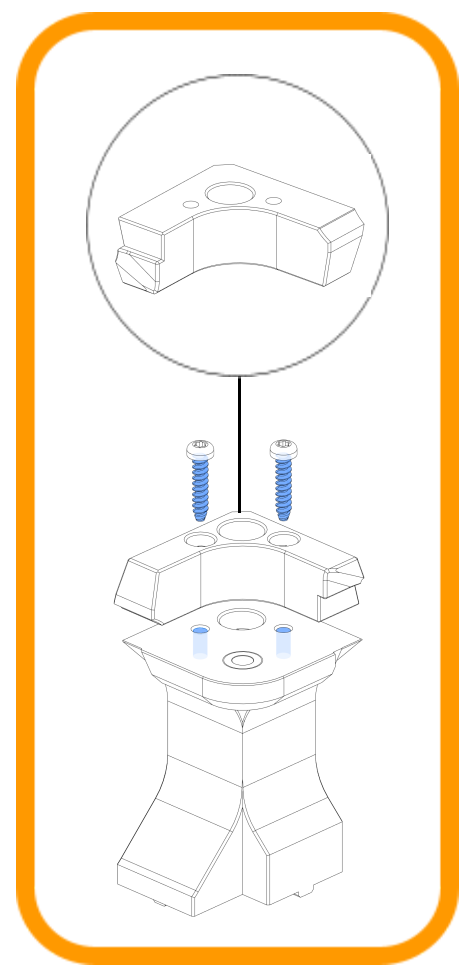
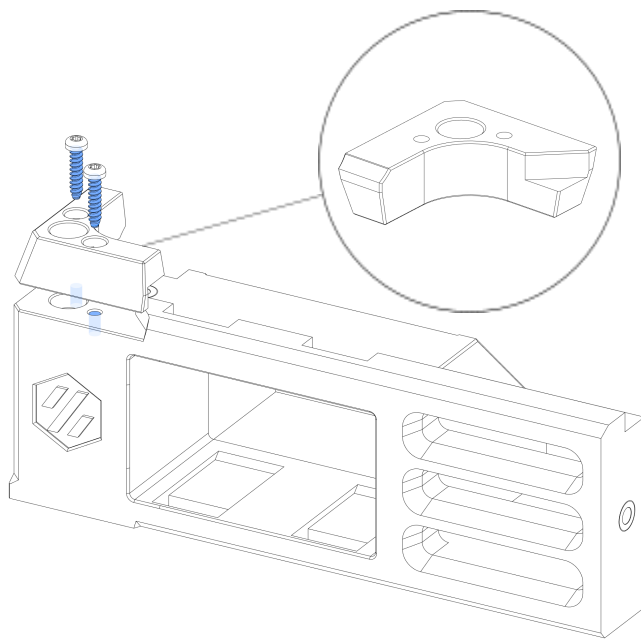
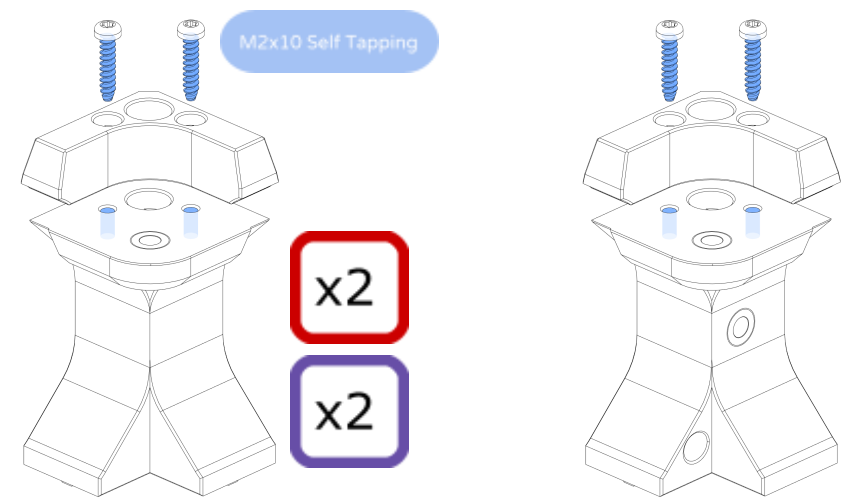
Test by temporarily inserting PTFE tube, and if this hole is too tight, widen the hole with drill bit.

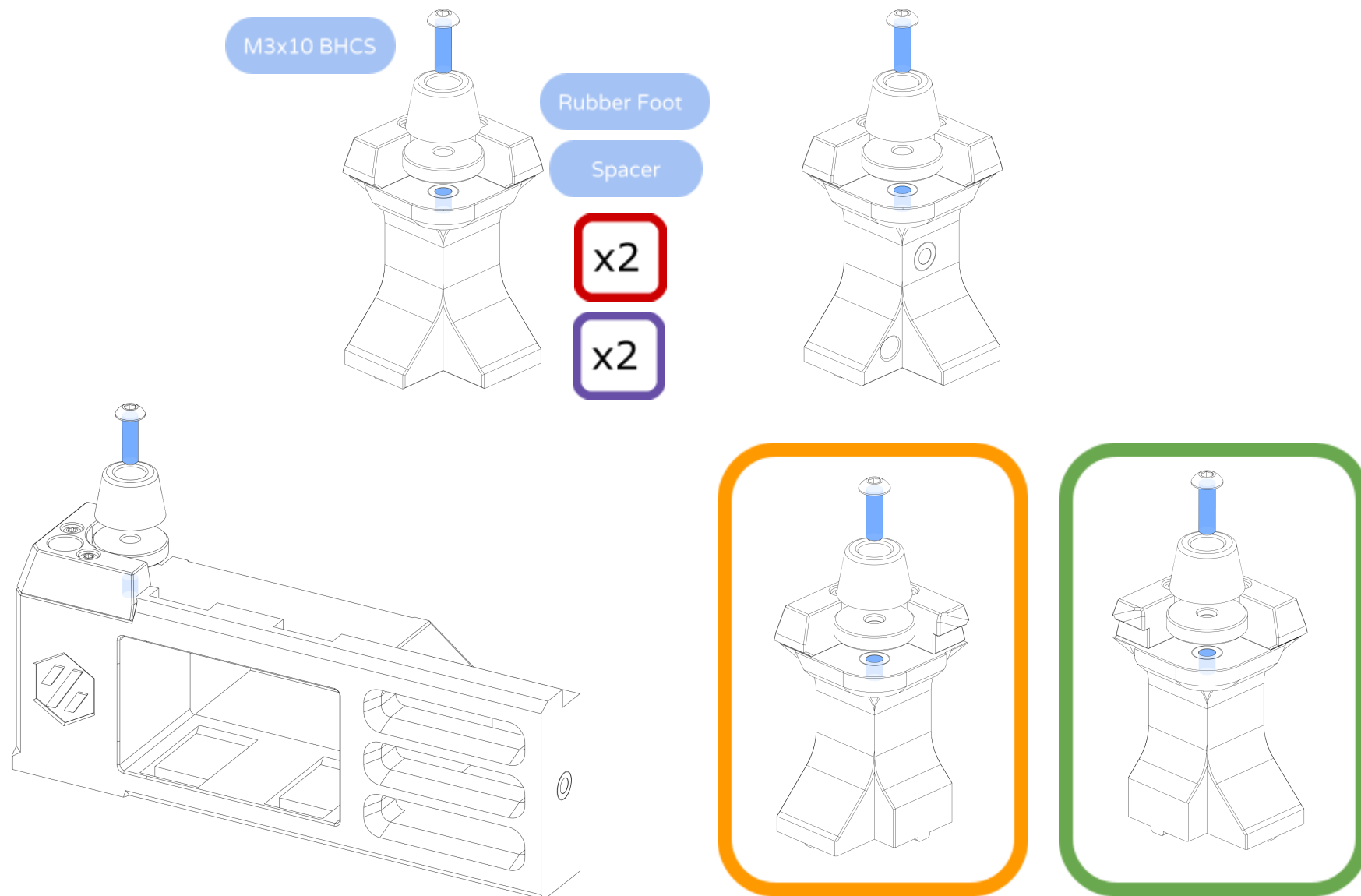


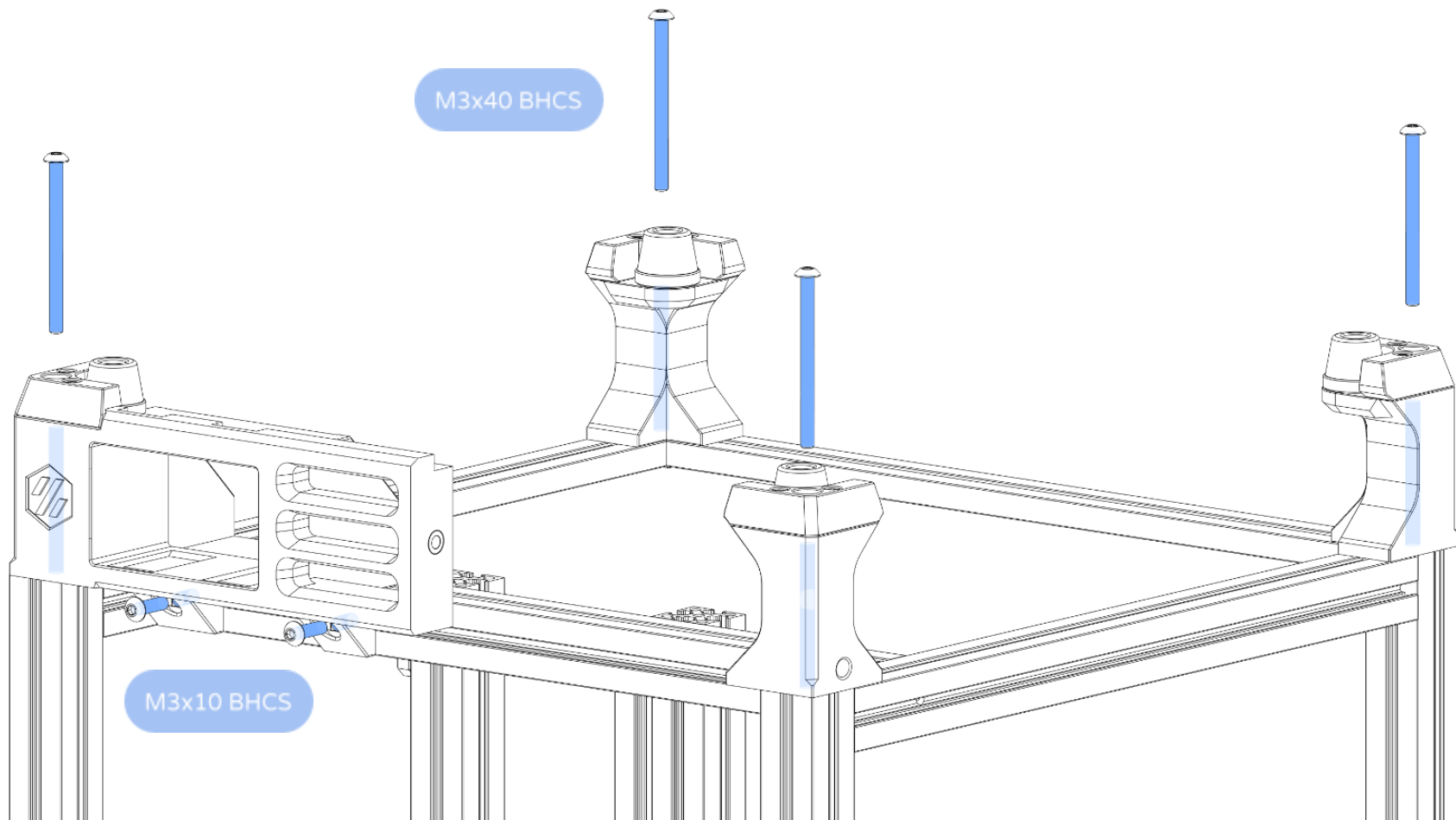
Only left display

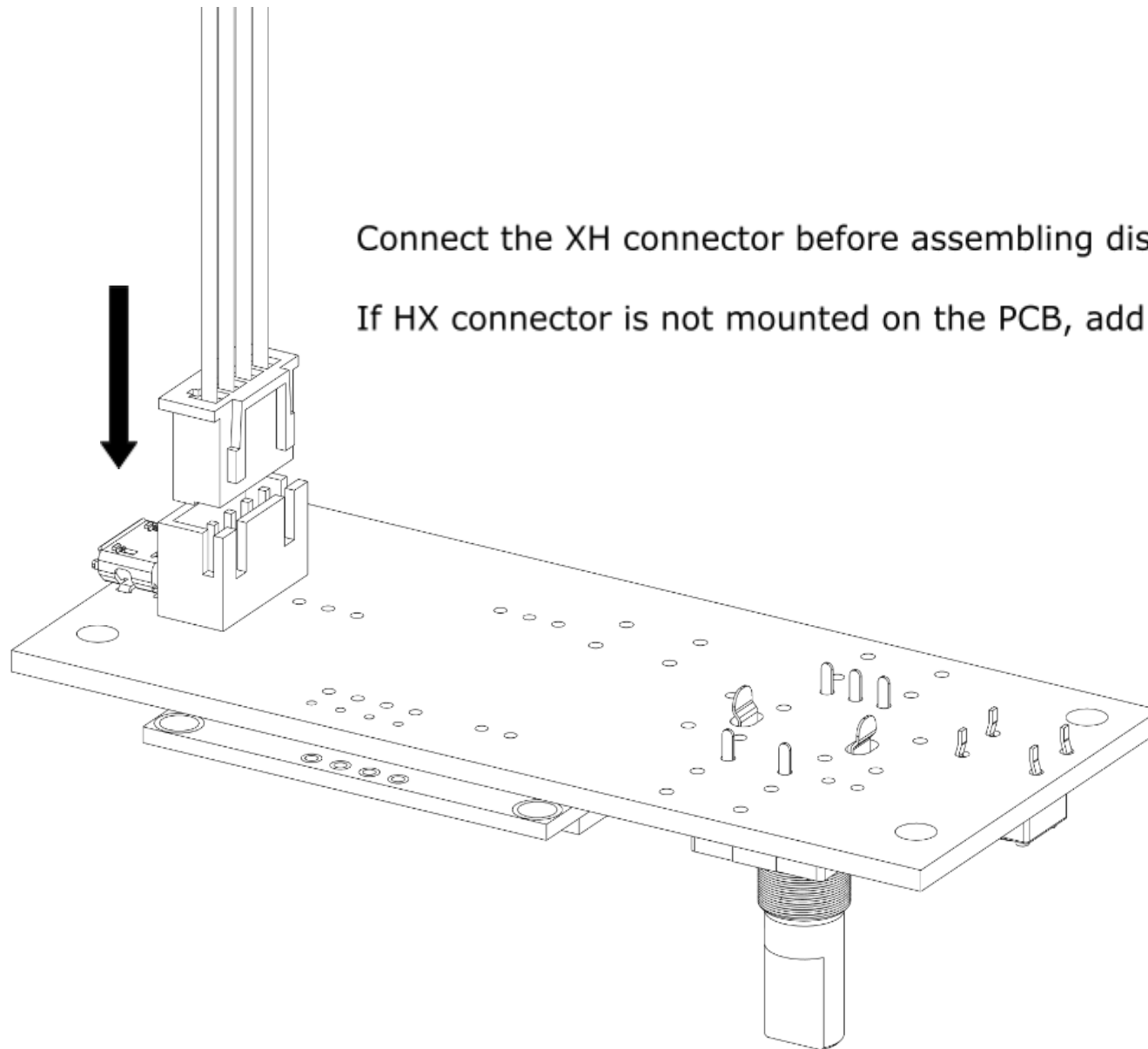


Only right display



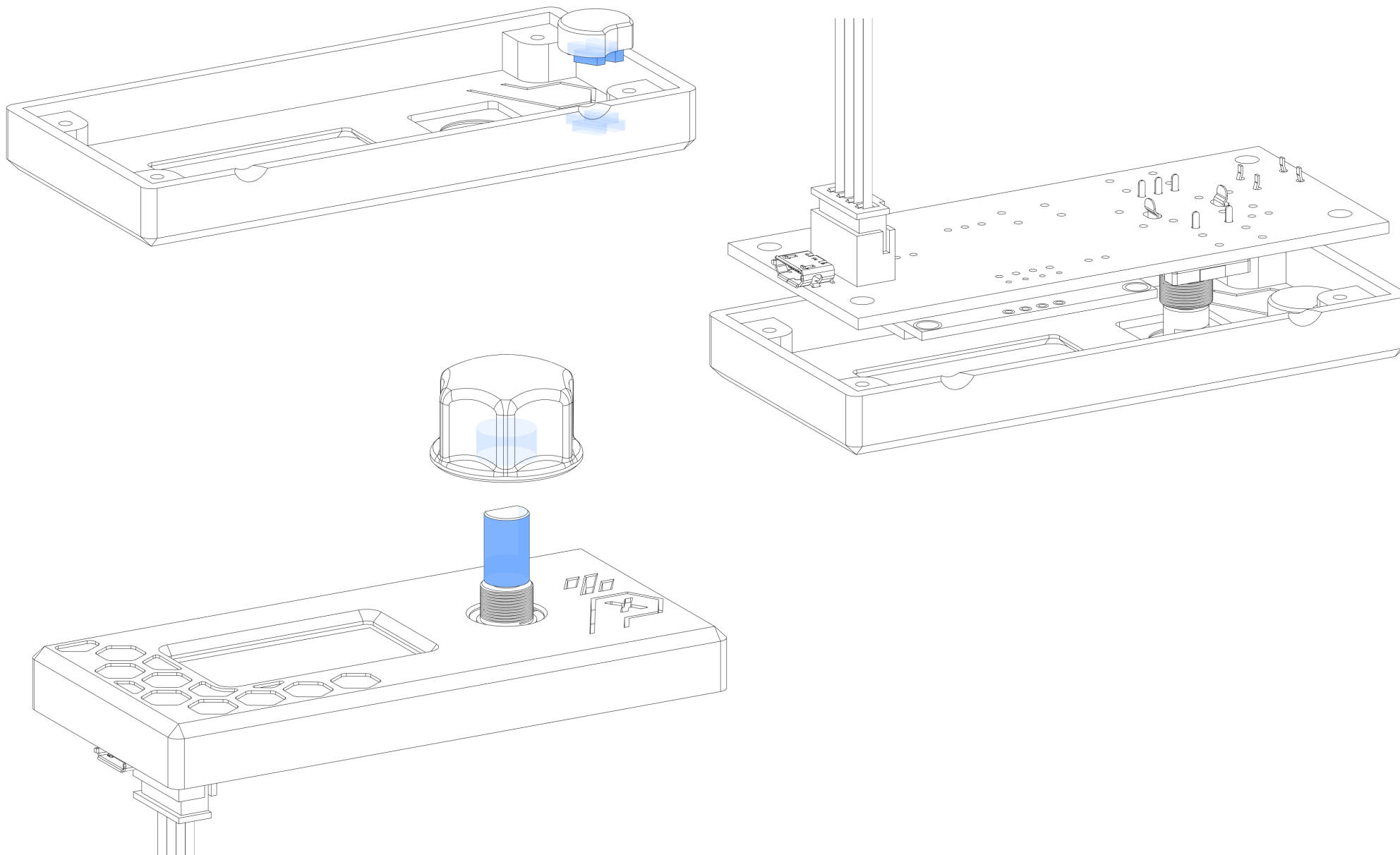


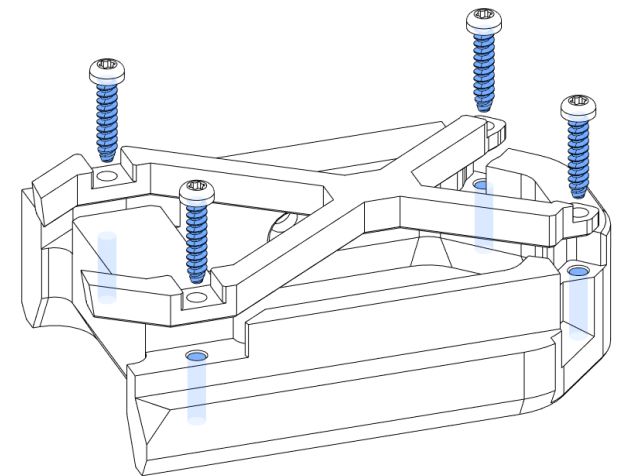
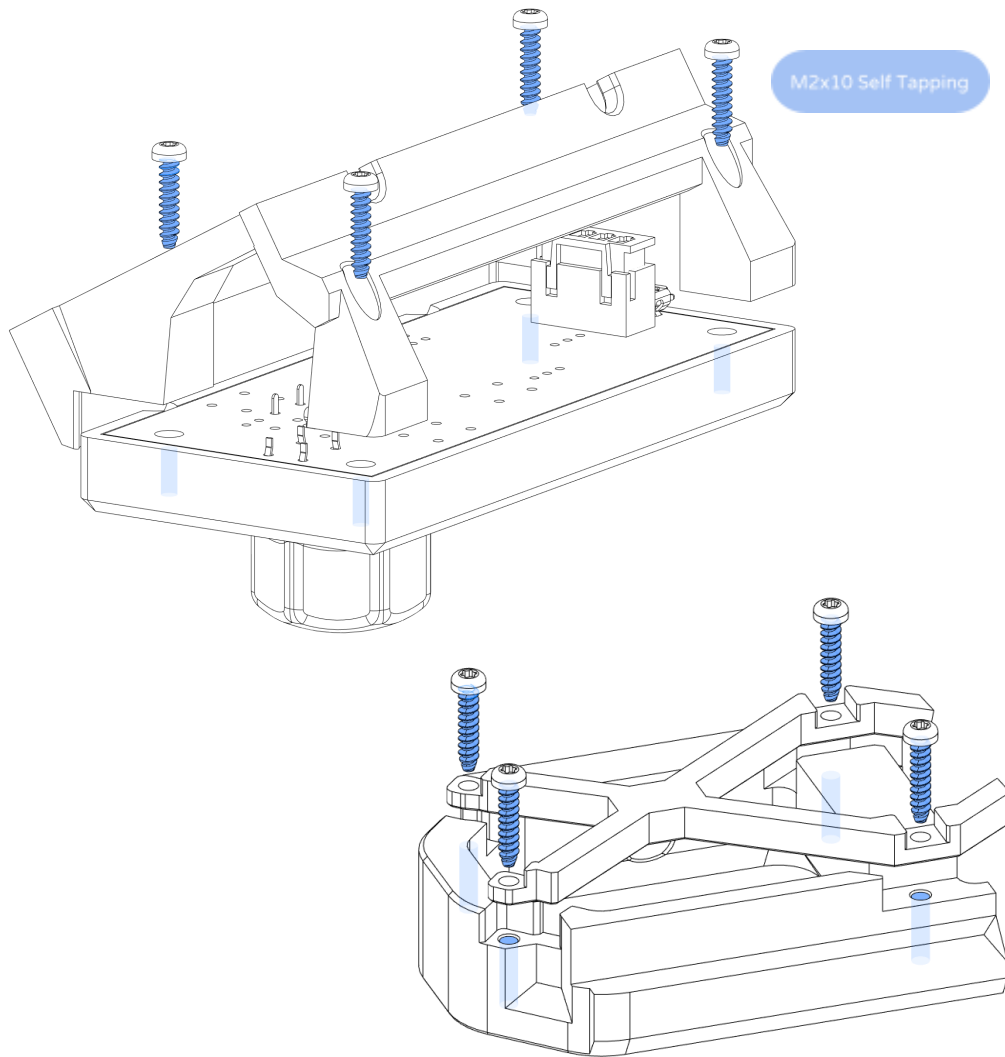


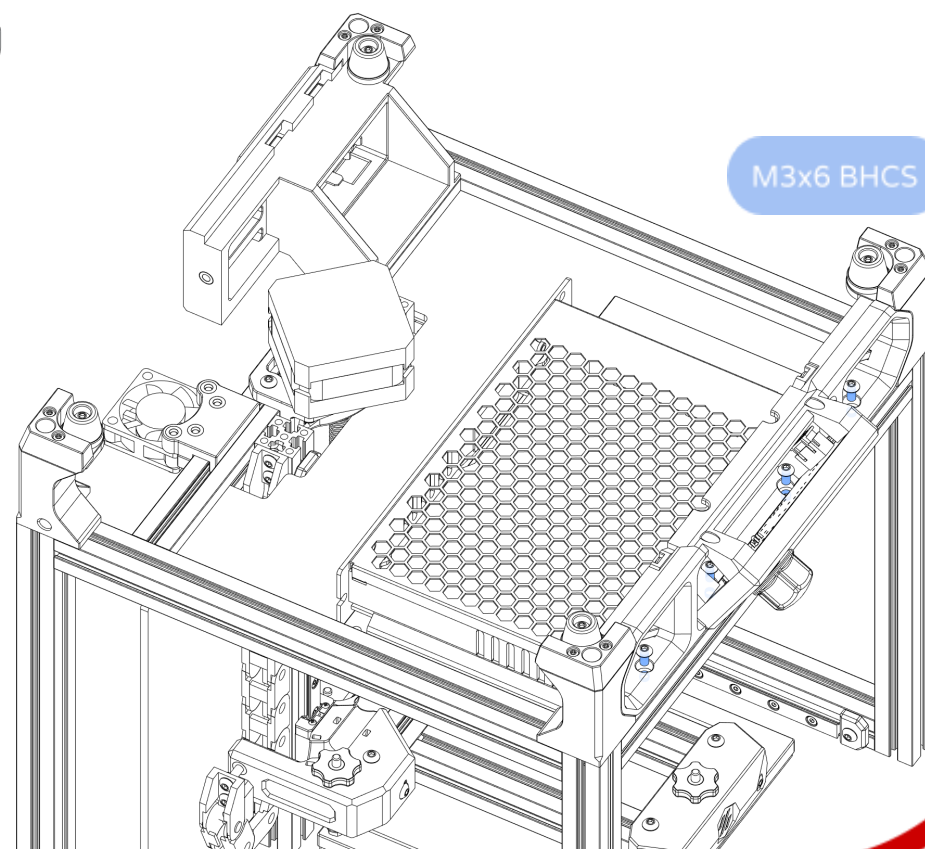
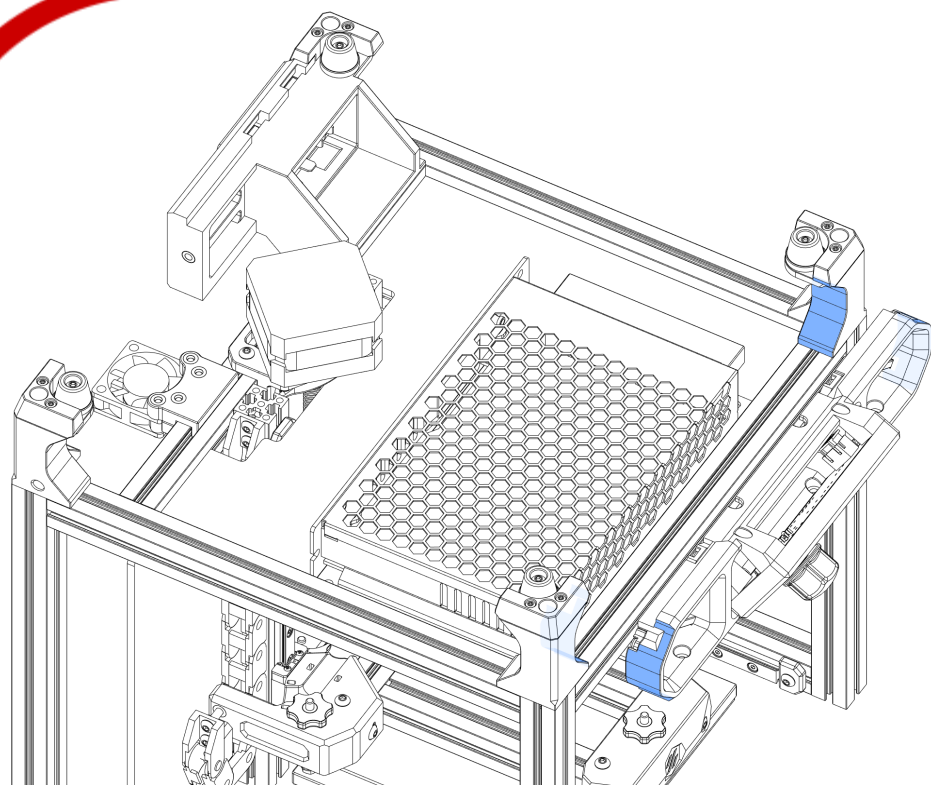


Connect the XH connector before assembling display PCB.

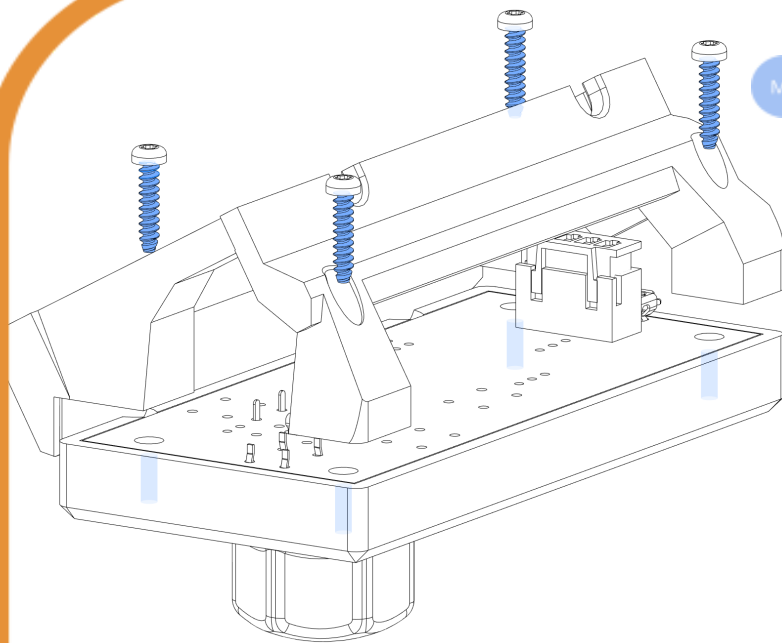
If HX connector is not mounted on the PCB, add it.



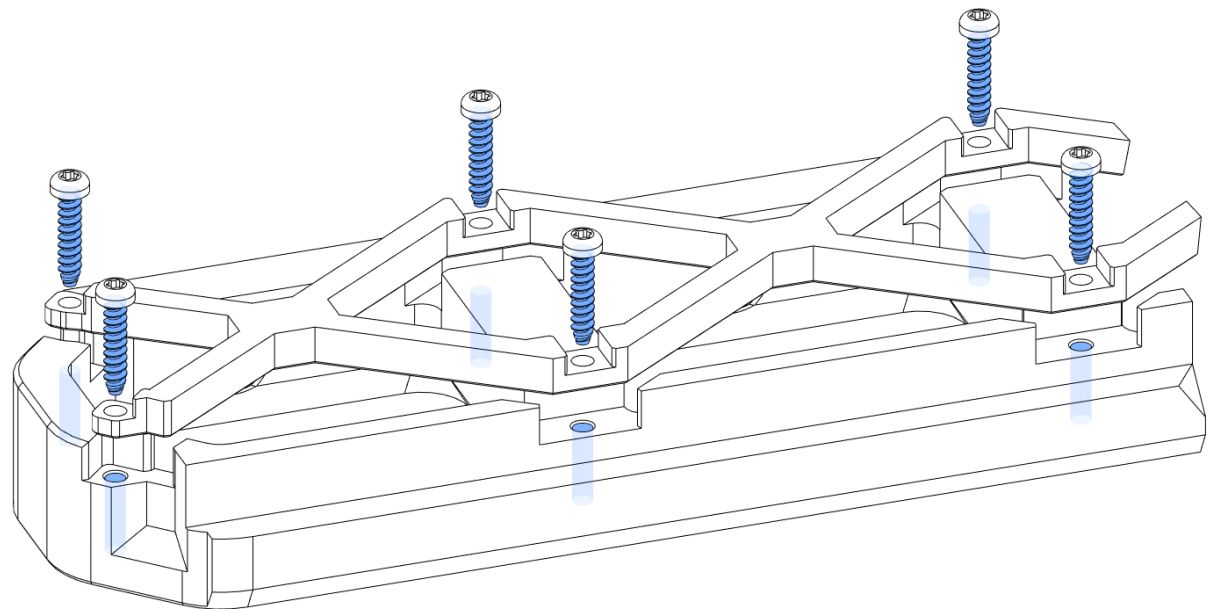


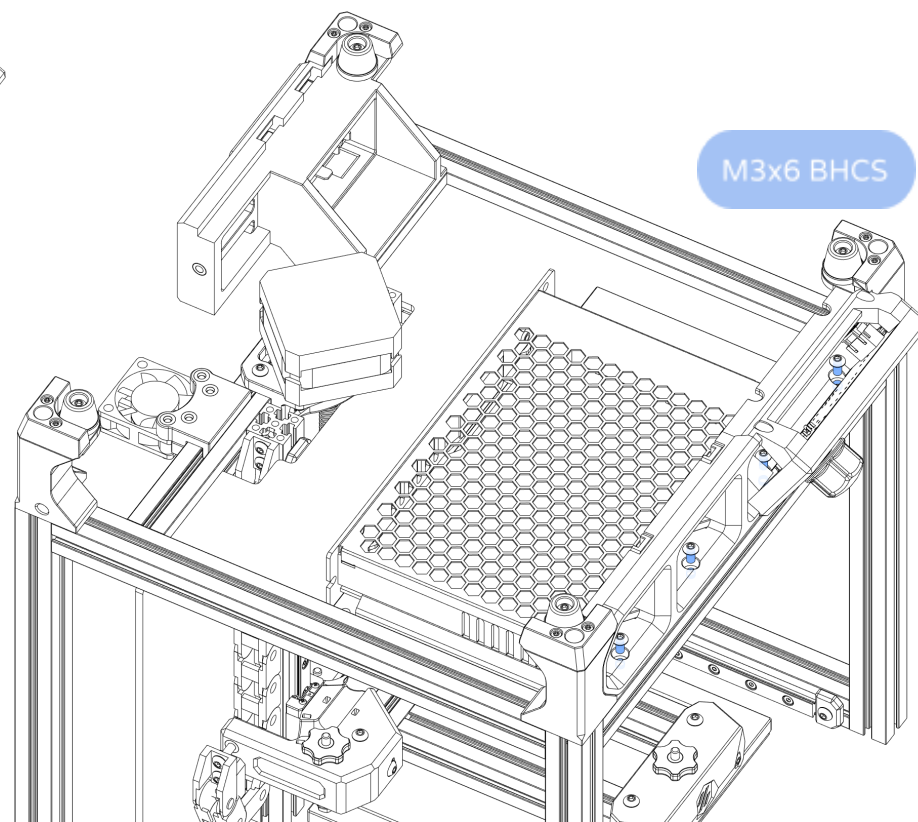
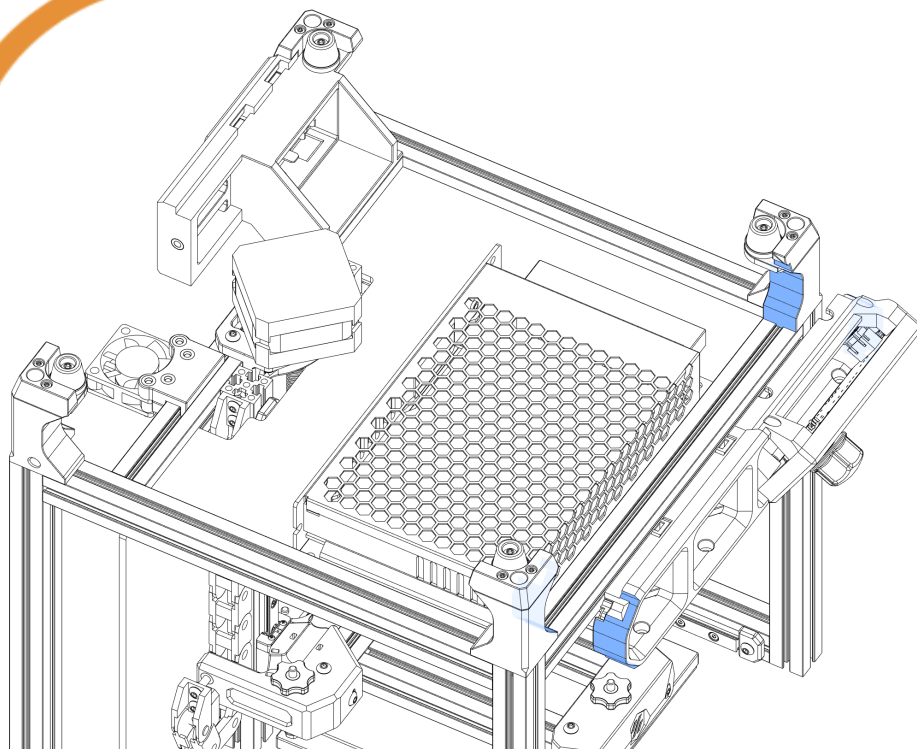


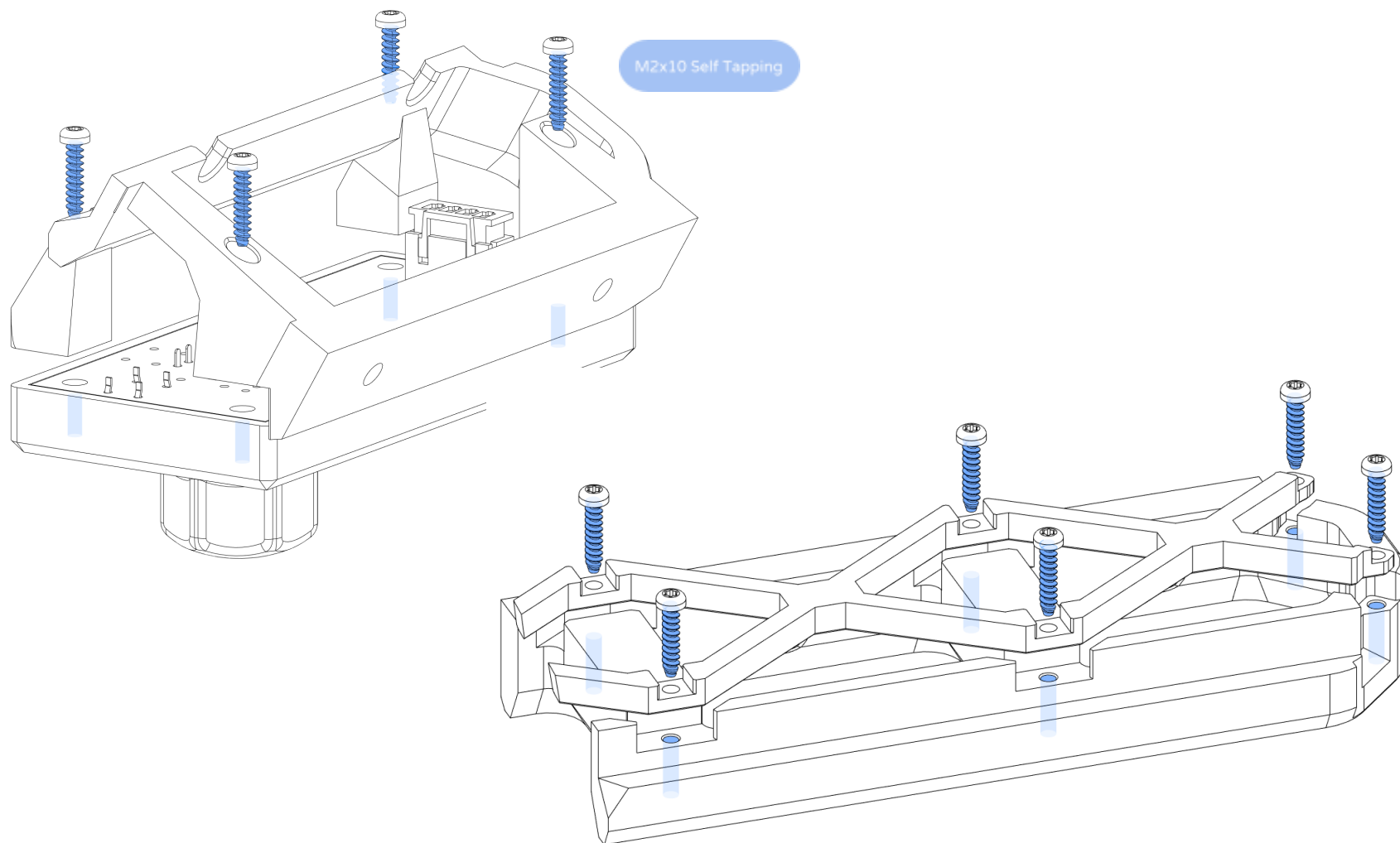
M3x6 BHCS

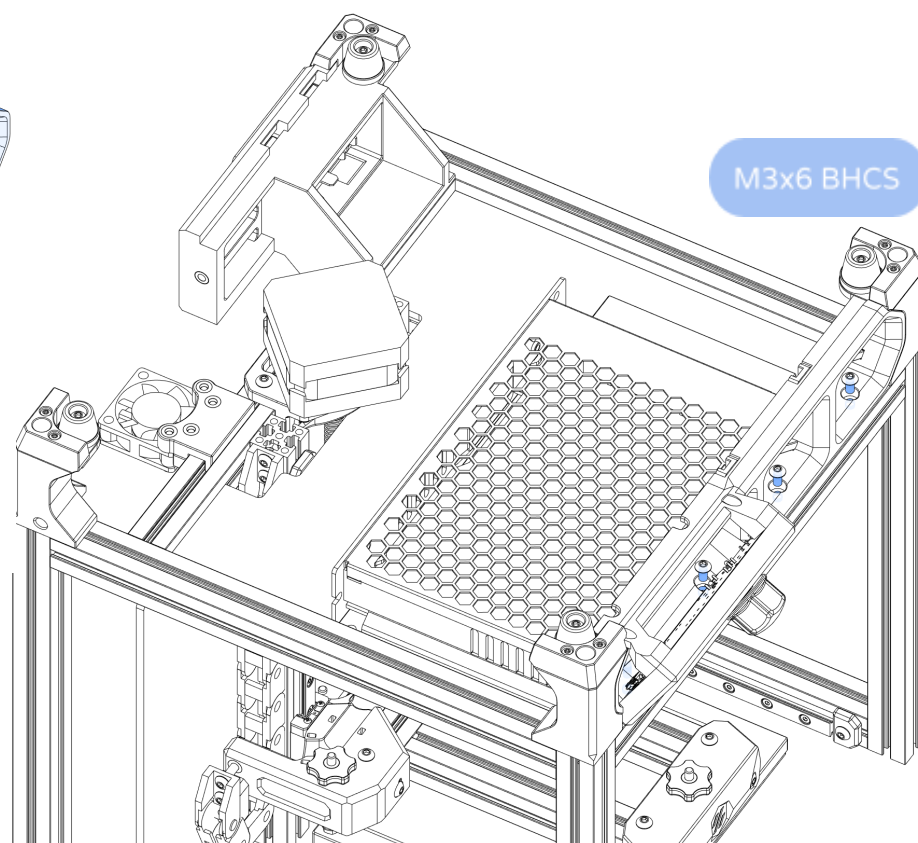
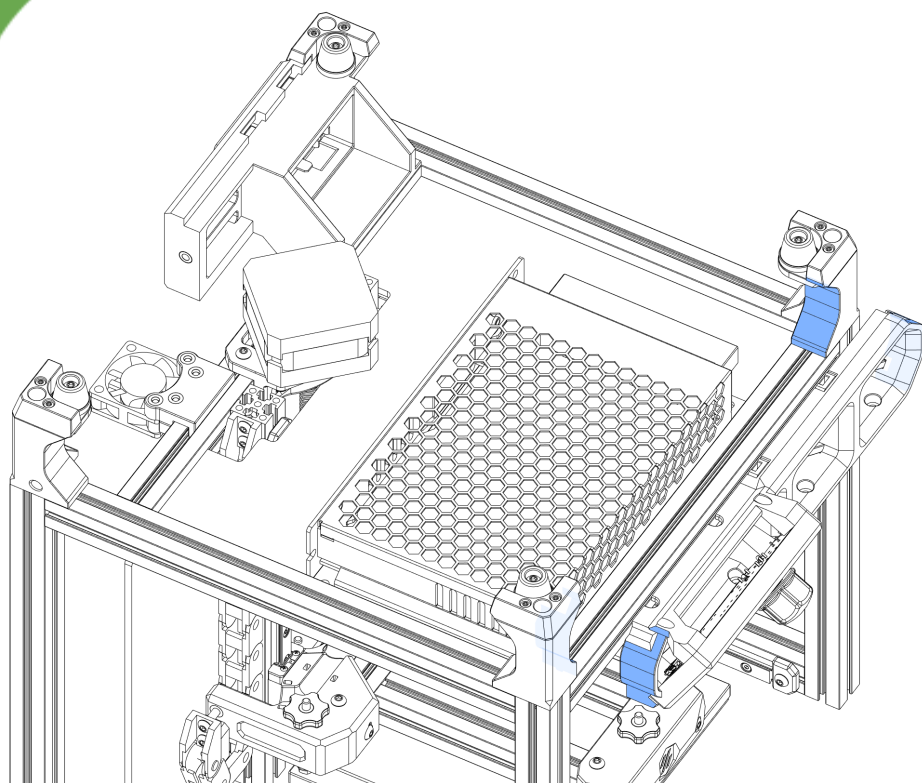


M2x10 Self Tapping

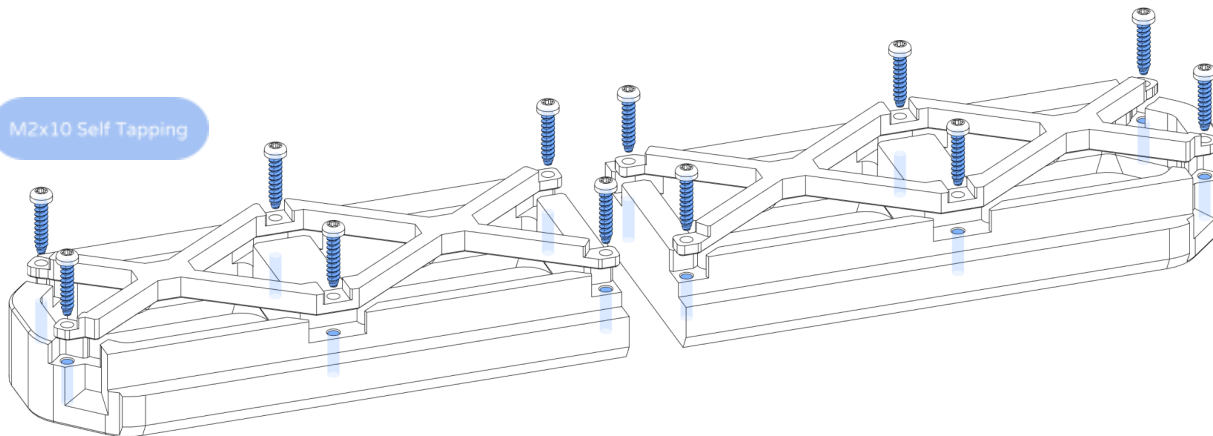




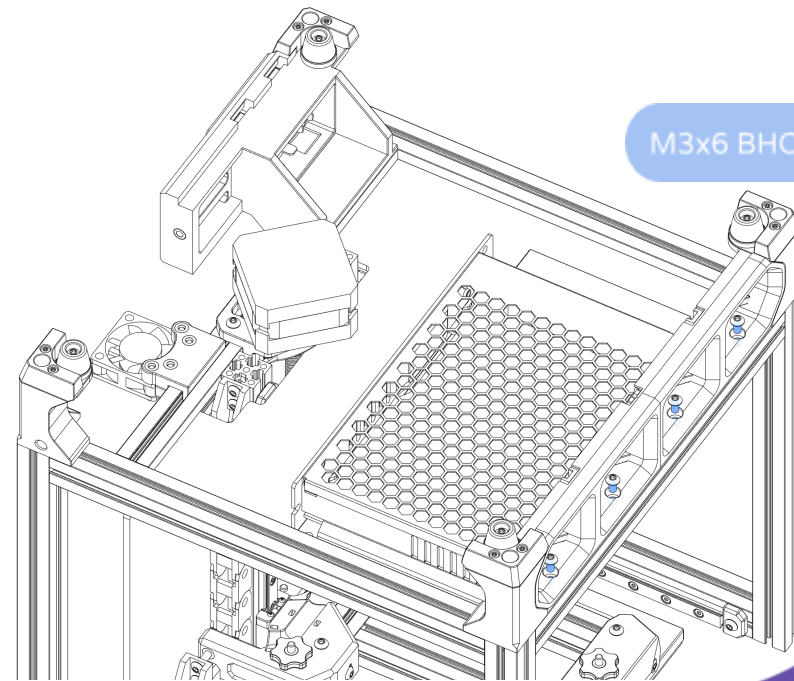
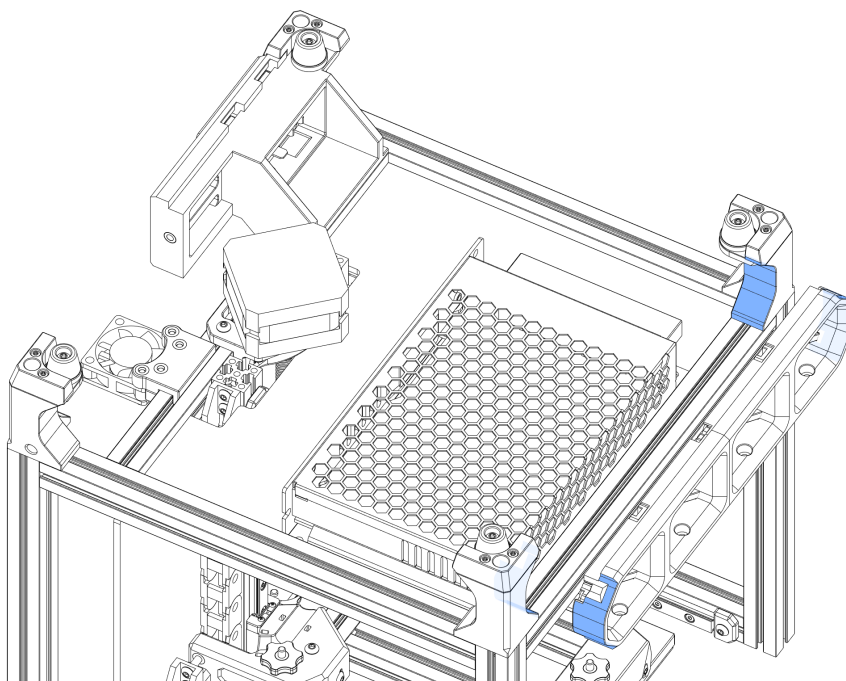




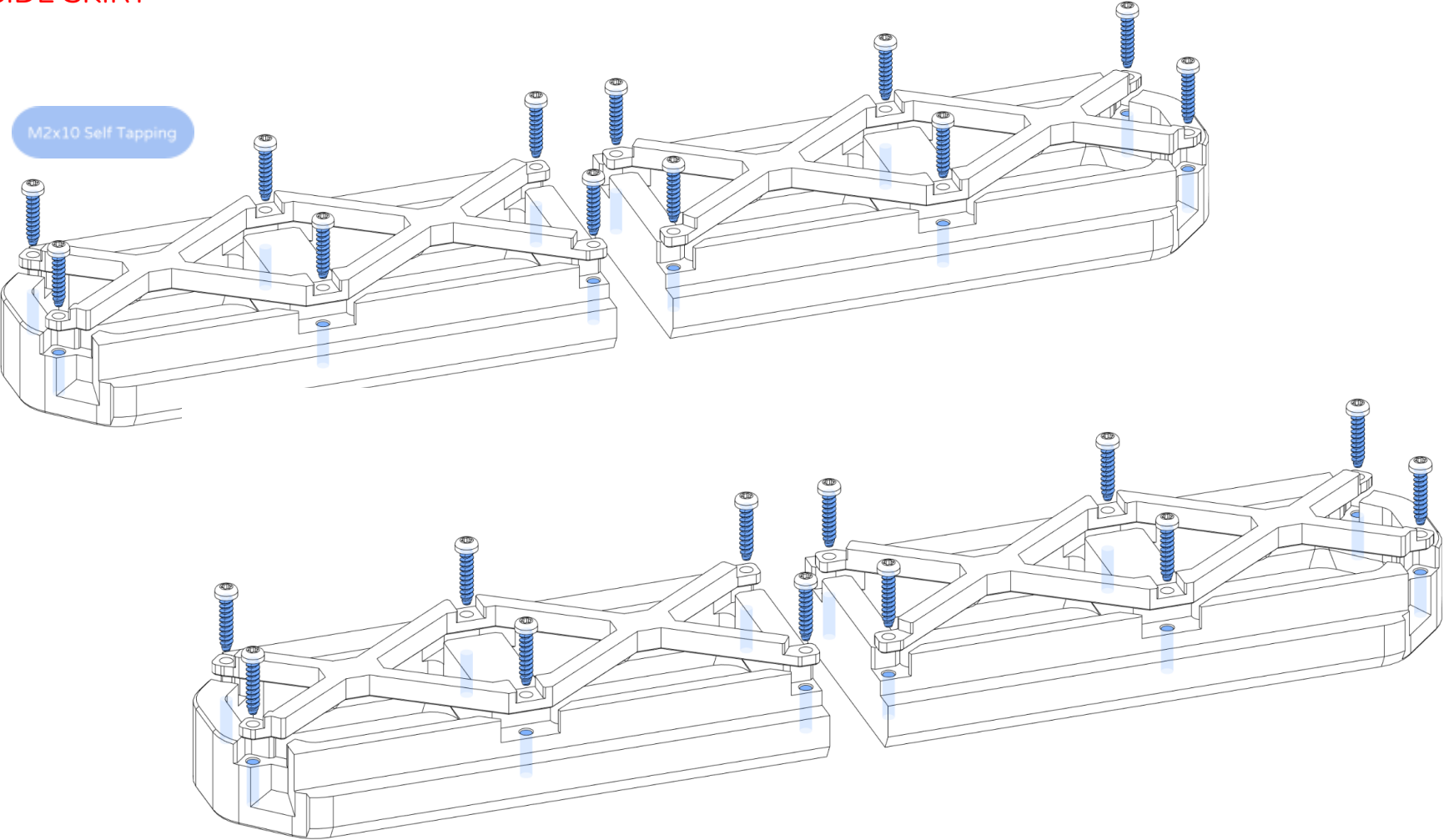
M2x10 Self Tapping

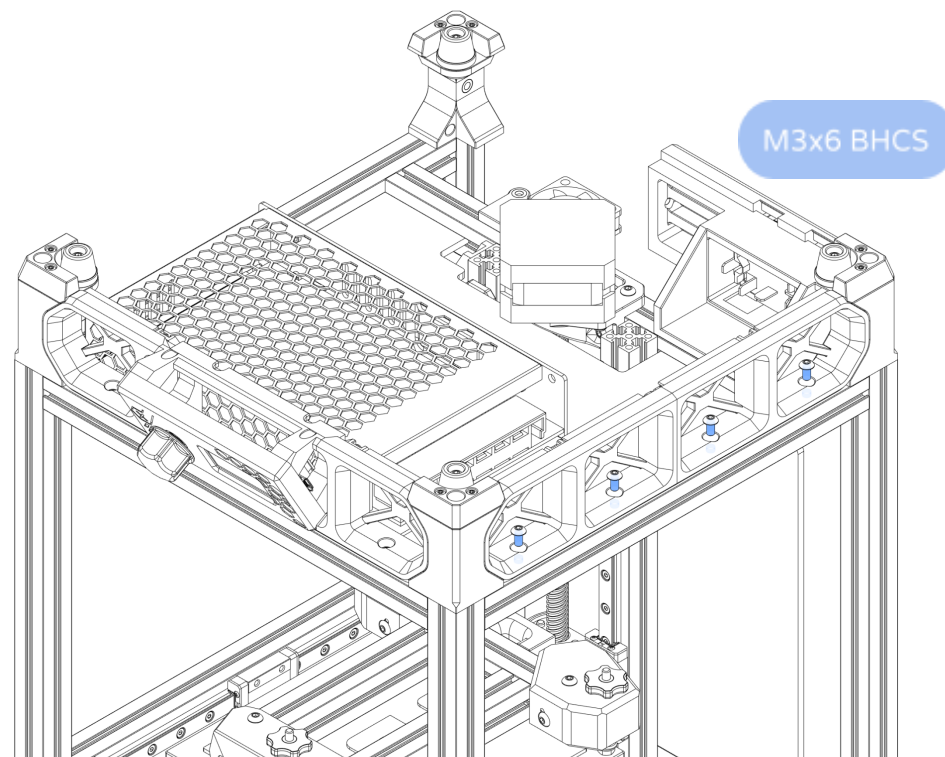
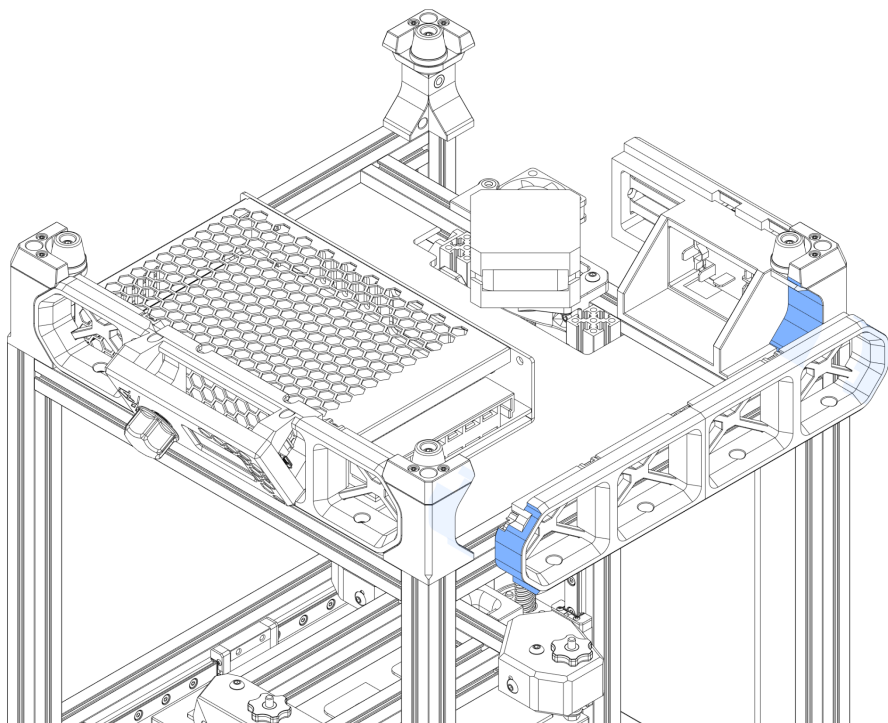


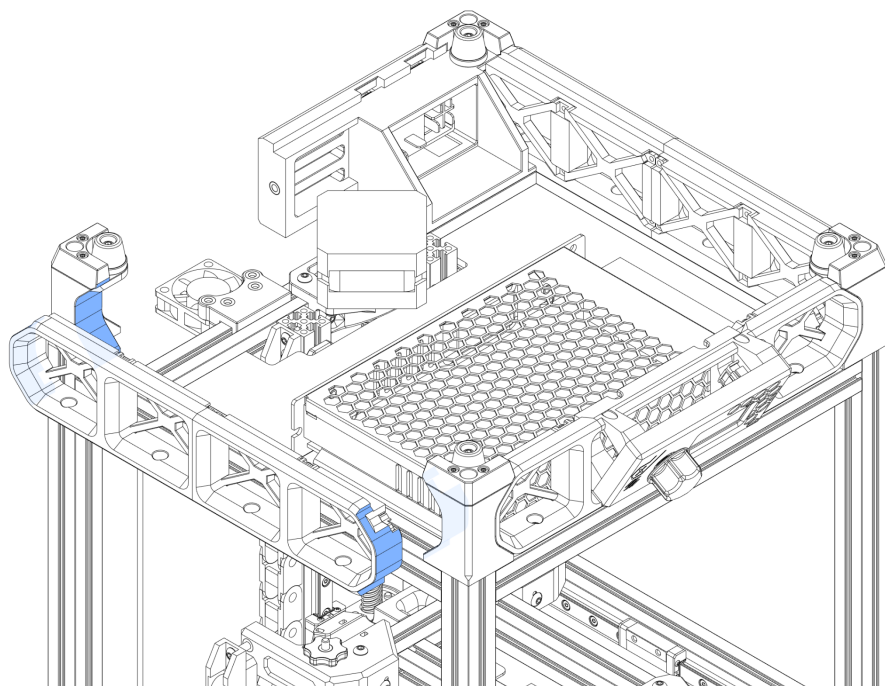
M3x6 BHCS



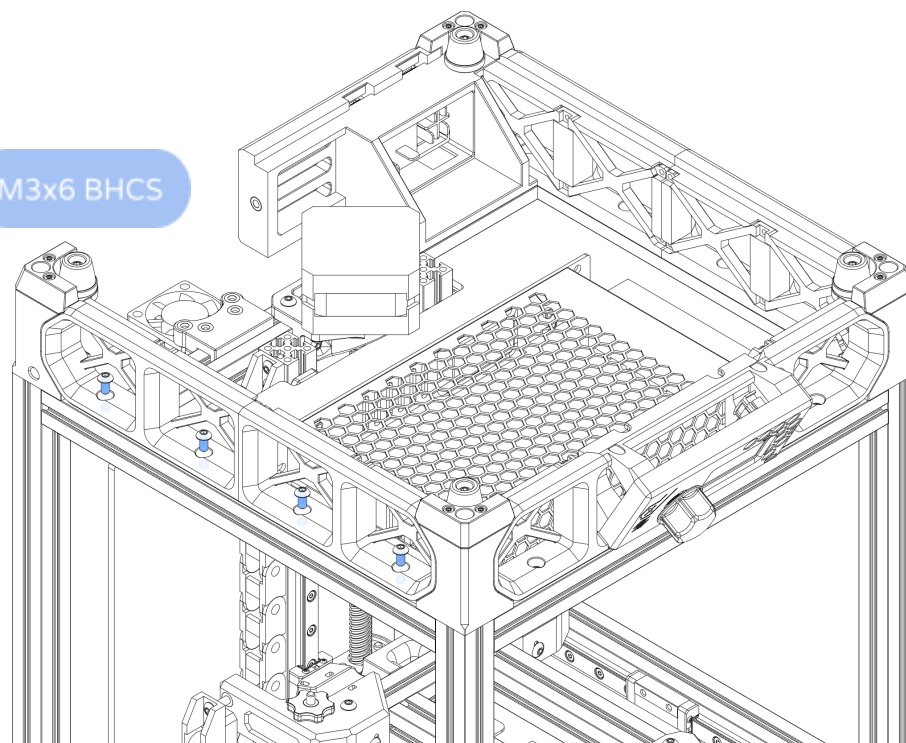
SIDE SKIRT



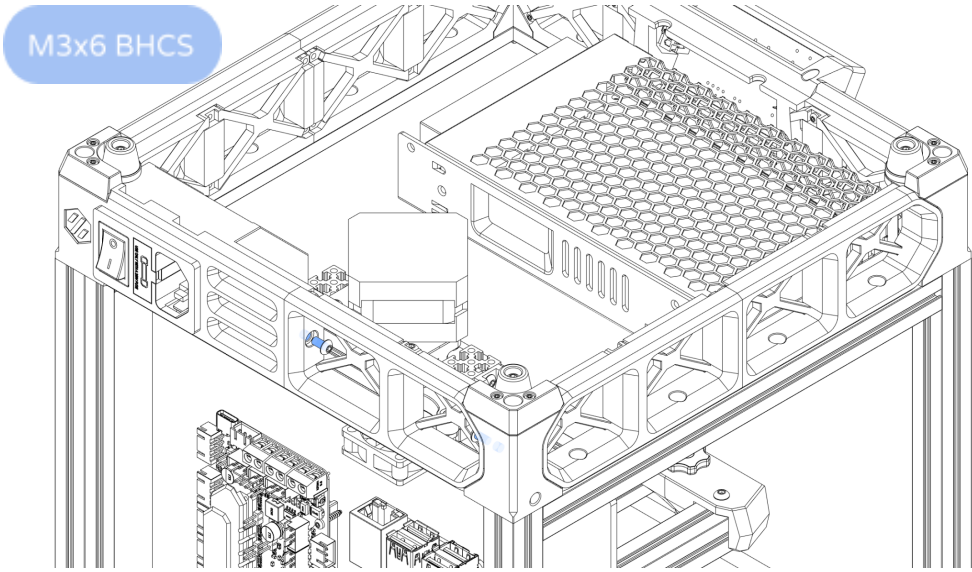
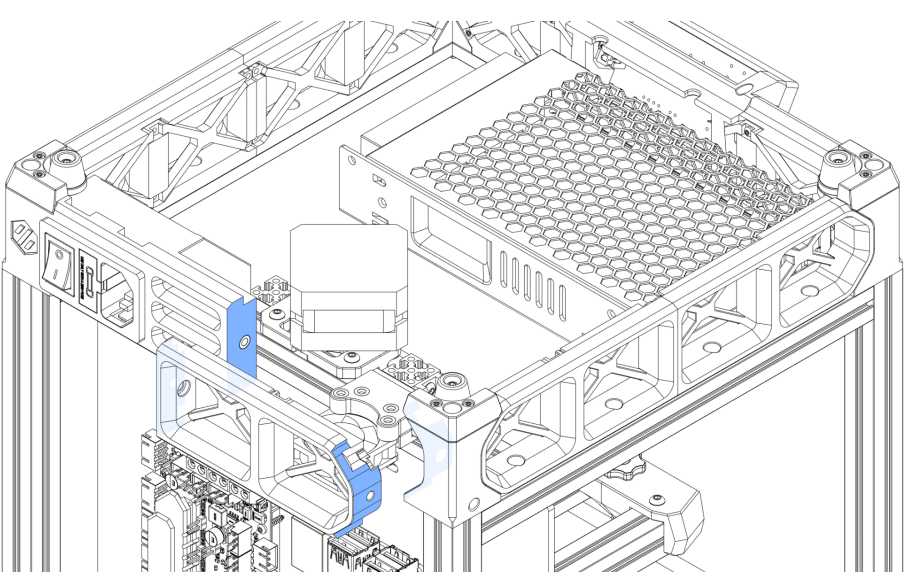
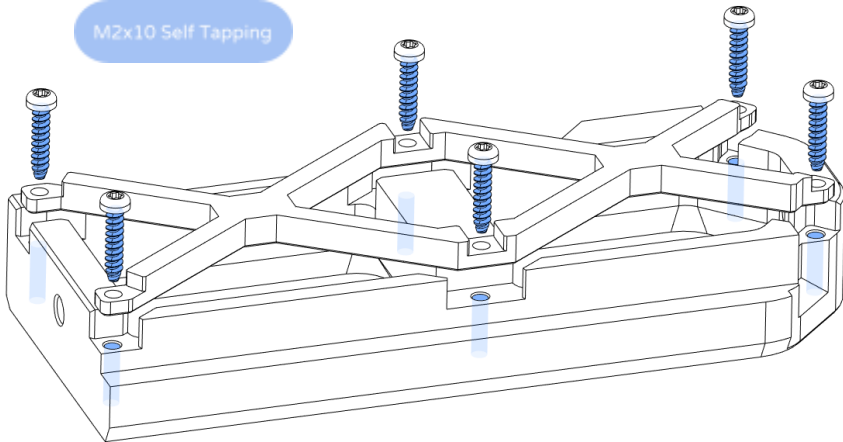


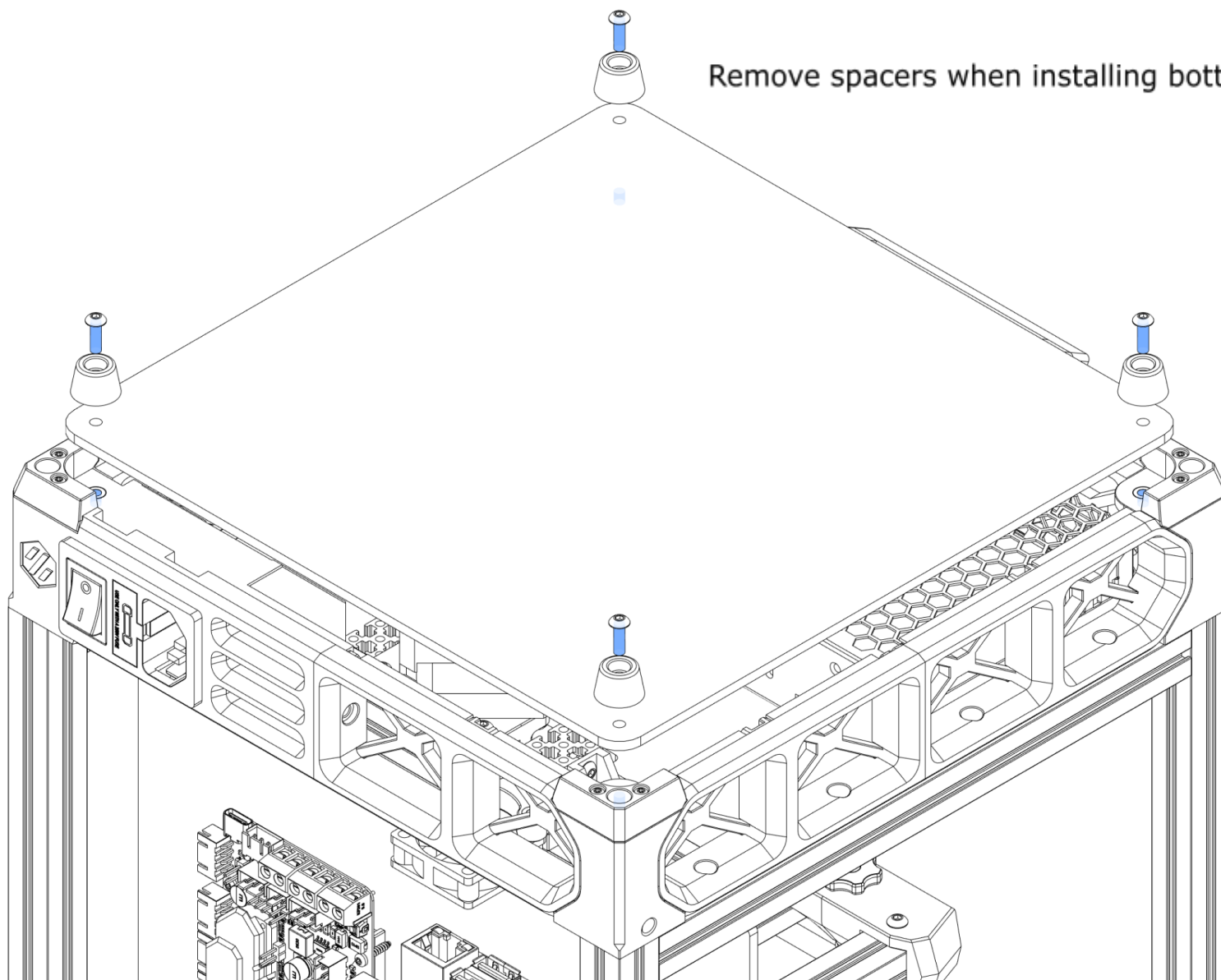


M3x6 BHCS



BACK SKIRT





Remove spacers when installing bottom panel.

